

# Controlling SONAR or SONAR LE from the A-PRO Series

The A-PRO series is compatible with SONAR or software in the SONAR LE series (hereafter collectively referred to simply as "SONAR").

After installing the A-PRO control surface plug-in, you'll be able to use a keyboard from the A-PRO series for controlling SONAR, using the ACT function.

## Installation Procedure

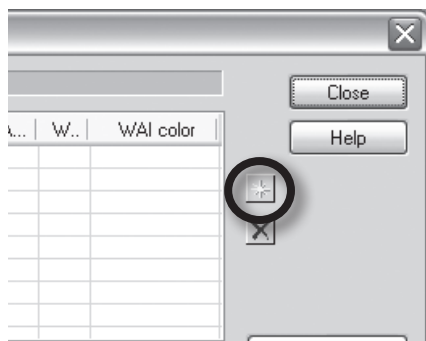
1. **Insert the supplied A-PRO CD-ROM into the CD drive.**  
If the automatic play dialog box appears, click [Open Folder and Show Files].
2. **Open the folder A-PRO\_CSP on the A-PRO CD-ROM, then double-click "Setup.exe."**
3. **Follow the instructions presented by the installer to perform the installation.**

## Making the Settings for SONAR

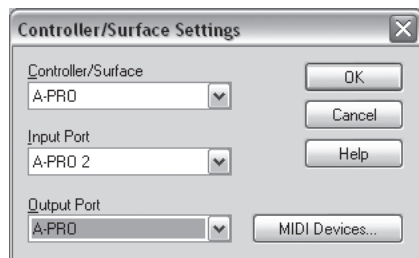
1. **Launch SONAR.**
2. **From SONAR's menus, click [Options] – [Controllers/Surfaces].**

The [Controllers/Surfaces] dialog box will appear.

3. **Click [  ].**



4. **In the "Controller/Surface Settings" dialog box, make the settings shown below, then click [OK].**



The [ACT] button on the A-PRO keyboard will light, and the A-PRO keyboard and SONAR will start communicating with each other.

5. **Click [Close] in the "Controllers/Surfaces" dialog box.**

### Memo

Once you've made these settings, the A-PRO instrument and SONAR will communicate with each other each time you open a project. Please be aware that such communications can take a considerable amount of time; however, this does not indicate a malfunction.



## Procedure

1. From SONAR's menus, click [Tools] – [A-PRO-1].

The "A-PRO Control Surface Plug-in" screen will appear.

The parameters in the foremost window (Active Window) are those that are assigned to the controllers of the A-PRO keyboard.



2. By operating the A-PRO series keyboard, you can control the parameters in the Active Window.

## Troubleshooting

A change in a parameter other than the one intended occurs when one of the controllers on the A-PRO series keyboard is operated.

ACT is a function that allows all parameters in the Active Window that can be controlled to be assigned to the A-PRO keyboard. For this reason, it is possible for some parameters to be assigned to controllers even though you didn't intend to assign them.

The ACT map, which describes which parameters are assigned to which controllers, can be modified by following the steps below.

1. Click [ACT], located in the upper right corner of the Active Window.
2. Using your mouse, manipulate the parameter that you wish to control.
3. Operate the controller on the A-PRO keyboard for which you wish to have the assignment be made.  
If you want to assign parameters to other controllers, repeat steps 2 and 3.
4. Click [ACT] in the upper right corner of the Active Window.  
You'll be presented with this message: "\*\* Parameters and \* Controls were touched. Do you want to keep these assignments?"
5. Click [Yes].

### Memo

For detailed explanations on how to make the settings, refer to the User's Guide that came with SONAR and the online help.

Even though the Active Window is switched, parameters are not assigned to the controllers (cannot make the change).

Depending on the plug-ins you use and the window you want to control, you may find that the use of ACT is not supported.

In such cases, you should prepare a control map (file) beforehand, then assign the parameters to the controllers using SONAR's Remote Control feature.

### Memo

For detailed instructions on how to use control maps, refer to the owner's manual that came with your A-300PRO/500PRO/800PRO. For instructions on how to use the remote control feature, refer to the User's Guide that came with SONAR, or the online help.

Copyright © 2010 ROLAND CORPORATION

All rights reserved. No part of this publication may be reproduced in any form without the written permission of ROLAND CORPORATION.